



Hanover / **387 OUTBOARD**

hanoveryachts.com / 2024



First impressions Count, but you don't have to worry about that.
The Hanover 387 Outboard has a sumptuous feel and a Hard-Top that stands out, delivering comfort, the greatest design, and durability, making your voyage truly unforgettable.

MAKE MEMORIES LAST.

Hanover



Hanover 387
OUTBOARD

2024



Hanover 387
OUTBOARD

2024



TECHNICAL SPECIFICATIONS



LENGTH OVERALL

38' 10" / 11.85 m
with outboards & anchor



BEAM

10' 10" / 3.30 m



DRAFT

33" / 0.8m



DRY WEIGHT

15,220 lbs / 6,904 kg



FUEL TANK CAPACITY

265 gal / 946 L



WATER TANK CAPACITY

50 gal / 190 L



HOLDING TANK

20 gal / 75 L



CAPACITY

15 day / 5 Night



CRUISING SPEED

22-24 mph / 31.3 kph



WIDE OPEN THROTTLE

43-45 mph / 69.2-72.4 kph



DEADRISE

16°



BRIDGE CLEARANCE

10' 7" / 3.2 m
12' 7" / 3.8 m with radar
or anchor light

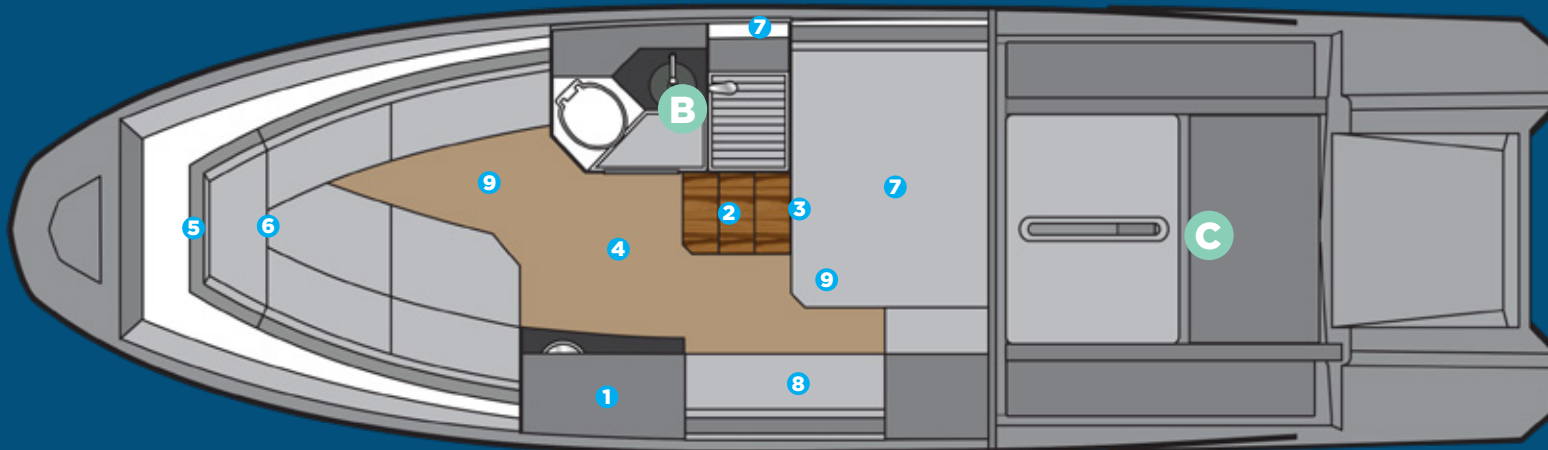


Hanover 387
OUTBOARD

2024

A CABIN

- 1 Kitchen with sink, synthetic granite top, space for microwave, induction stove, fridge, 3 drawers and two cabinets
- 2 Stainless steel staircase with 3 wide teak steps
- 3 Acrylic access sliding door with lock and key
- 4 High Quality Laminate Flooring
- 5 Decorative mirror on the bow
- 6 U-shaped sofa for 3 people that converts into a double bed, with teak retractable table
- 7 Double bed in the middle ship cabin
- 8 Sofa in the middle ship cabin
- 9 Free standing up of 9' in cabin center



B BATHROOM

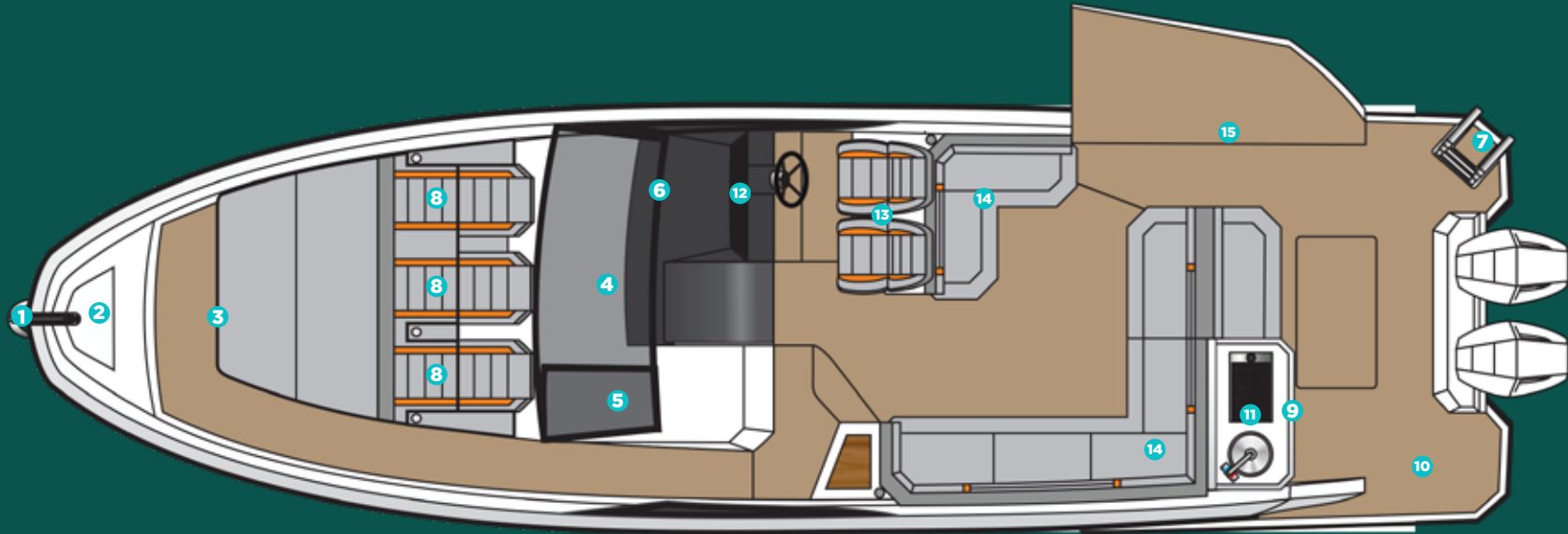
- Electric toilet with 22 gallon waste box, macerator pump and external nozzle
- Cabinet with two doors, sink in synthetic granite with bowl overlaid in tempered glass
- Air cabinet with two mirrored doors
- Decorative coating with glass inserts
- Shower box free standing height 6'2" /1,88 min
- Tempered glass box
- Shower with mixer
- Non-slip floor

C ENGINE

- Interior in gray gelcoat
- Non-slip sole, flat
- Insulation, acoustic and thermal
- Fire extinguisher
- Compartment, sealed, for air conditioning
- Compartment, sealed, for batteries
- Exhaust fans (2)
- Engine room hatch
- Access door with gas pistons and lock
- Fuel tank, aluminum, with level gauge

HULL AND COCKPIT

- 1 bow eye
- 2 Stainless steel handrail with teak seat in the bow
- 3 20" hatch in the bow from cabin to bow area
- 4 4 panoramic tempered glass windows
- 5 2 tilting tempered glass windows in the cockpit
- 6 Tempered glass windshield and anodized aluminum frame
- 7 4-step telescopic ladder on platform
- 8 Triple bow solarium with adjustable backrest
- 9 Handle stainless steel in the gourmet space



- 10 Teak table
- 11 Gourmet space with top lid and sink
- 12 Instrument panel that supports up to two 9" electronics with built-in compass
- 13 Dual rider seat with standing or sitting
- 14 Two L-shaped sectional sofa in the cockpit and another in the stern
- 15 Electric Opening Lateral Deck - Beach Club System



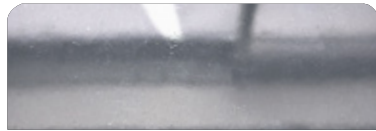
**CUSTOMIZE AND
HAVE THE MOST UNIQUE
VESSEL AT SEA**



EXTERIOR PAINT OPTIONS



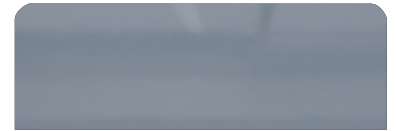
Grigio Silver



Tungsten Silver



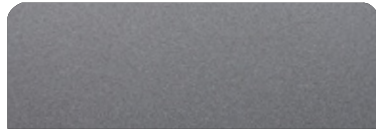
Pure Gray



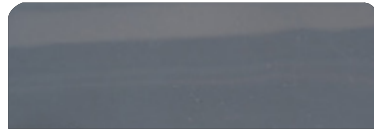
Nardo Gray



Orkney Gray (Highgloss)



Orkney Gray (Matte)



Moonstone Gray



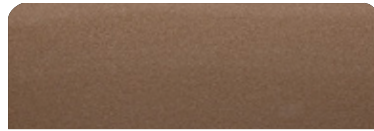
Sequin Blue



Gales Black (Tuxedo) (Highgloss)



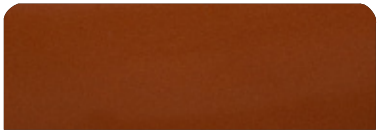
Gales Black (Tuxedo) (Matte)



Havanna Brown



Heraldic Blue



Orange Pearl



Moscou Red



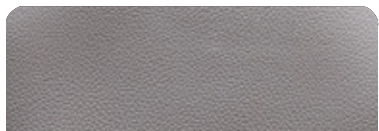
Marrakesh Brown



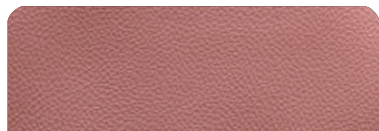
Macaw Blue



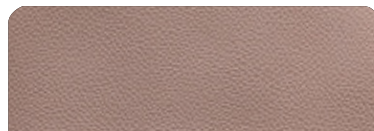
UPHOLSTERY OPTIONS



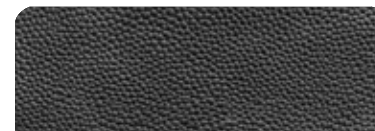
Fern



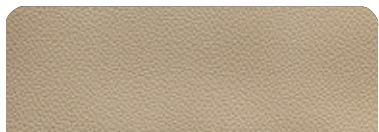
Terracota



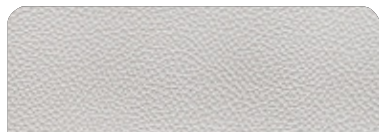
Caramello



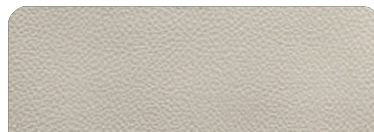
Black



Land Rover



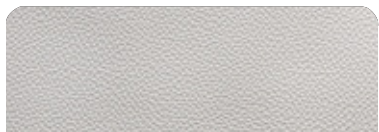
Taupe



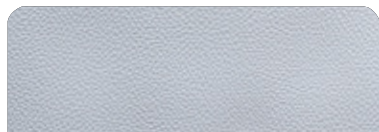
Ivory



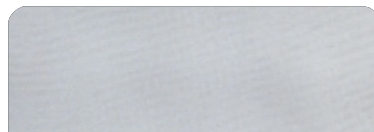
Orange



Off White



Gray



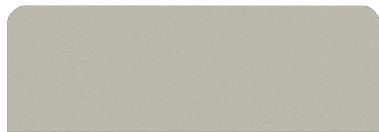
Silver



Carbon Fiber



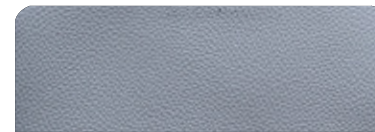
White



Beige



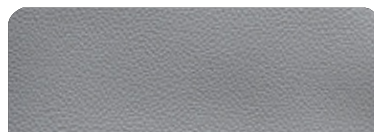
Matelasse Honeycomb



New Corolla



Blue



Corolla

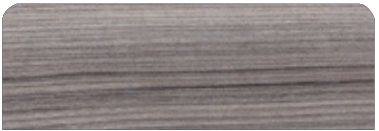
FURNITURE VINYL OPTIONS



Salina



Massal



Cherry



Patina



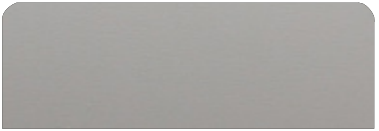
Alder



Bronze



Freije



Taupe Super Matte



Black Line



Taupe High Gloss



Canyon



Onix



Metallic



Gray Oak

INTERIOR FLOORING OPTIONS



Alba



Almond



Pine



Amendola



Sand



Cement



Imbuia



Cumaru



Gray



Duna



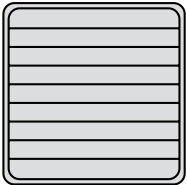
Vintage



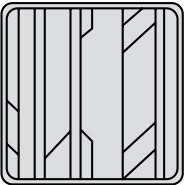
Kashmir

DECK FLOORING OPTIONS

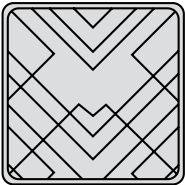
PATTERNS



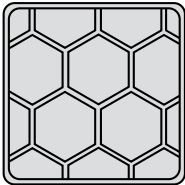
Classic



Aztec



Imperial

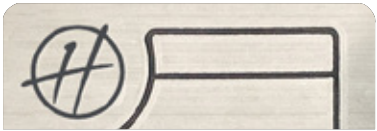


Beehive

EVA



Madeira



Gray



Ocher

SYNTHETIC TEAK



Madeira



Gray



Sand



INTERIOR PAINT OPTIONS



Ivory Beige



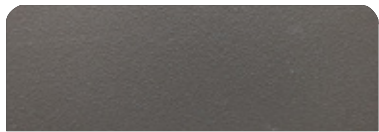
Mist Beige



Corolla Gray



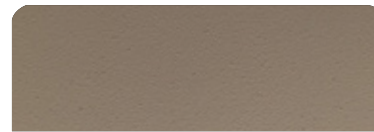
Black



Terra Brown



White



Land Rover



Compass Gray

PREMIUM COMFORT

There's plenty of room for sunbathing on the bow and a hangout area at the stern, so bring your friends and family; there's only good times on the HANOVER 387.

With the Hard-Top you have convenience and privacy to feel more comfortable while at sea.

Create and share memories that will last a lifetime.
The choice is yours.





Hanover 387
OUTBOARD

2024

STANDARD EQUIPMENT

HULL AND DECK

- 8" through bolted stainless steel cleats (06 count)
- 1 bow eye
- 2 eyes at the stern
- Stainless steel handrail with teak seat in the bow
- Self-draining floor
- 20" hatch in the bow from cabin to bow area
- 4 panoramic tempered glass windows
- 2 tilting tempered glass windows in the cockpit
- Tempered glass windshield and anodized aluminum frame
- 4-step telescopic ladder on platform
- Double bow solarium with adjustable backrest
- Handle stainless steel in the gourmet space
- Compartment for fenders on the platform floor
- 5 compartments below the cockpit seats
- Teak table
- Upholstery in anti-mold leather
- Gourmet space with top lid, sink, fridge, cutting board
- Hard-Top
- Storage, acrylic
- Acrylic cup holder in the cockpit
- Instrument panel that supports up to two 9" electronics with built-in compass
- Dual rider seat with standing or sitting
- Two seating areas in the cockpit
- Cooler
- Garbage Displacement
- Electric Opening Lateral Deck - Beach Club System

HEAD

- Electric toilet with 22 gallon waste box, macerator pump and external nozzle
- Cabinet with two doors, sink in synthetic granite with bowl overlaid in tempered glass
- Air cabinet with two mirrored doors
- Decorative coating with glass inserts
- Shower with mixer
- Tempered glass box
- Shower box free standing height 6'2" /1,88 m
- Non-slip floor

CABIN

- Acrylic access sliding door with lock and key
- Stainless steel staircase with 3 wide teak steps
- Ultra moisture resistant MDF furniture
- Kitchen with sink, synthetic granite top, space for microwave, induction stove, fridge, 3 drawers and two cabinets
- High Quality Laminate Flooring
- Decorative mirror on the bow
- U-shaped sofa for 3 people that converts into a double bed, with teak retractable table
- Double bed in the middle ship cabin
- Sofa in the middle ship cabin
- Coverings in waterproof fabric or anti-mold nautical leather
- Side walls covered with anti-mold foam and nautical leather
- Luxury layette kit with 10 pillows
- Free standing up of 9' in cabin center

ENGINE ROOM

- Interior in gray gelcoat
- Non-slip sole, flat
- Insulation, acoustic and thermal
- Fire extinguisher
- Compartment, sealed, for air conditioning and batteries
- Exhaust fans (2)
- Engine room hatch
- Access door with gas pistons and lock
- Fuel tank, aluminum, with level gauge

PUMPS AND TANKS

- Water tank, potable, 50 gal
- Fresh water pump
- Bilge pumps, engine room, with automatic switches
- Bilge pump, amidships, with automatic switch
- Collection box for shower with pump
- Showerhead, aft, with mixer

ELECTRICAL

- Circuit breaker board
- Selector switch for pier/generator/inverter
- Electrical panel in the cockpit with special switches
- Navigation lights
- Anchoring lights
- Indirect LED lighting on the cockpit ceiling, bathroom, cabin, cabinet and under the sofas and dashboard
- LED spotlights on the cabin and cockpit ceiling
- Lighting in the engine room
- 120v sockets in the cockpit, cabin and bathroom
- 12v / USB sockets on the dashboard and in the cabin
- Shore power socket
- Individual master switches for accessory batteries and motors

OPTIONS INCLUDED

- Synthetic teak or EVA on bow, cockpit and swim platform
- Sound system
- Anchor Windlass Electric System
- Anchor, 22 lbs, with chain
- VHF Radio w/ Antenna
- Sunroof, electric opening
- Holding tank with macerator
- Air conditioning, 12,000 BTU
- Generator
- Refrigerator,
- Trim tabs, electric
- Spotlights
- Shorepower
- Gourmet Area

ESSENTIAL PACKAGE

PREMIUM PACKAGE

**TWIN MERCURY® V8 300HP OUTBOARDS
W/ JOYSTICK PILOTING**

**TWIN MERCURY® VERADO 350HP V10
OUTBOARDS W/ JOYSTICK PILOTING**

Engine

GPS

GPS SIMRAD® GO7 (7")

GPS SIMRAD® GO9 (9")

Sound System

BOSS® SOUND SYSTEM +
6 JBL® Marine Speakers + Amplifier

**FUSION® SOUND SYSTEM +
6 Marine Speakers + Amplifier**

Exterior Painting

1 Color (Hull)

**2 Colors or More
(Hull, Deck or HT)**

A/C

12,000 BTU (Cabin)

**12,000 + 6,000 BTU
(CABIN - COCKPIT)**

Refrigerator

Refrigerator - 110V

ISOTHERM® 65L FRIDGE 12V

VHF Radio

Uniden® VHF Radio w/ Antenna

SIMRAD® VHF RADIO W/ ANTENNA

Power Generator Kohler® 6KVA



Complete EVA Flooring



Anchor Windlass Electric System



Electric Trim Tabs (Flaps)



Fenders & Lines



USCG Boating Safety Kit



Shore Power + Shore Cord 50A



Macerator Pump and Holding Tank



Galvanic Isolator (Electrical Protection)	✓	✓
Windshield Wipers	✓	✓
Heavy Duty Folding Table (Cockpit)	✓	✓
Electric Opening Sunroof	✓	✓
Power Charger 100A	✓	✓
Headlights w/ Remote (Cruising Spotlight)		✓
LED 24" TV Set and Mounting		✓
Design Items Set (Pillows, Beddings, Cushions, Towels, Accessories)		✓
Italian Steering Wheel		✓
Teak Table On Stern (Platform Extra Table)		✓
Bar Stools/chairs On Stern (Kit Of 2 Banquets)		✓
Hot Water System - Heater (Shower)		✓
Induction Electric Stove (Cabin)		✓

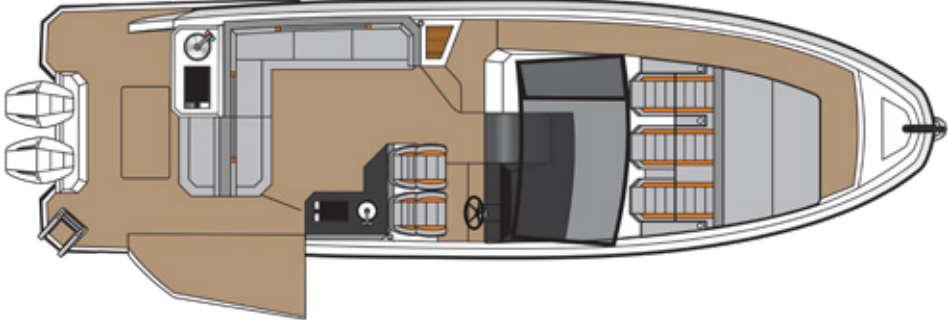
\$457,915

\$499,115

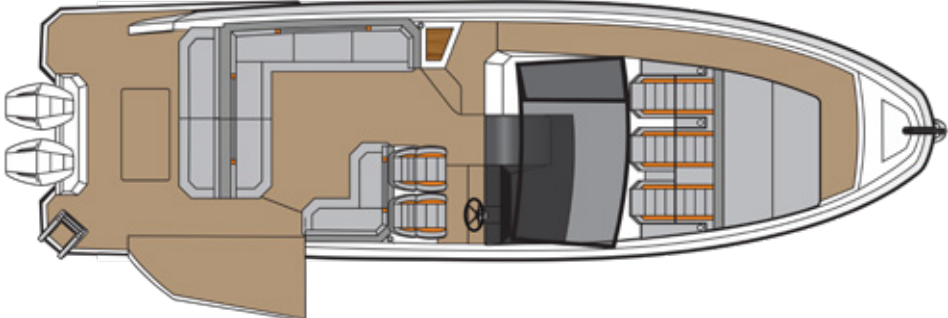


LAYOUT OPTIONS

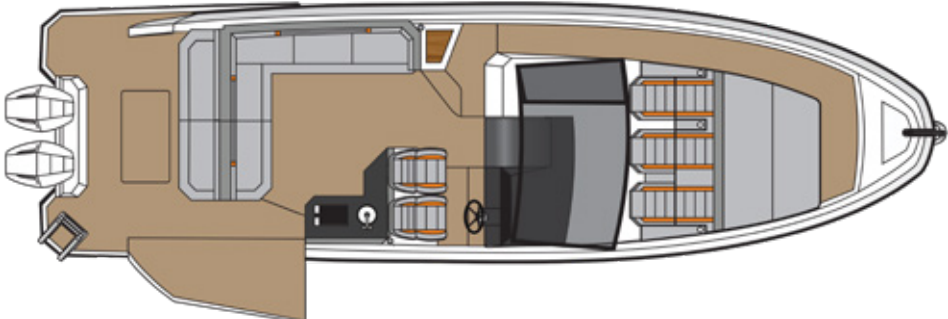
Starboard Kitchen
and Aft Grill
\$3,350



Aft-Sundeck
\$3,750



Starboard Kitchen
and Aft Sundeck
\$4,550



ADDITIONAL UPGRADES



Mercury®
Vessel View (5")
(Additional Screen)

\$3,250



Mercury®
Vessel View (7")
(Additional Screen)

\$3,950



Mercury®
Vessel View (9")
(Additional Screen)

\$4,500



Raymarine
Radar Quantum I

\$6,750



Raymarine
Radar Quantum II

\$7,250



GPS Raymarine®
Element 7s (7")
(Additional Screen)

\$2,250



GPS Raymarine®
AXIOM (9")
(Additional Screen)

\$4,950



GPS Raymarine®
AXIOM (12")
(Additional Screen)

\$7,950



GPS Garmin® MAP 923xsv
NMEA & Transducer (9")
(Additional Screen)

\$4,995



GPS Garmin® MAP 1242xsv
NMEA & Transducer (12")
(Additional Screen)

\$8,750



Garmin®
Radar

\$7,750



SIMRAD® Radar
HALO20+

\$6,750



GPS SIMRAD®
Go7 (7")
(Additional Screen)

\$3,295



GPS SIMRAD®
Go9 (9")
(Additional Screen)

\$4,350



GPS SIMRAD®
NSS12 (12")
(Additional Screen)

\$6,950

ADDITIONAL UPGRADES



Manual Aft Shade
w/ 2 Poles

\$2,950



Manual Aft Shade
(Stobag)

\$3,200



Electric Aft Shade
(Stobag)

\$4,200



Bow Tent
(Bimini Top On Bow)

\$1,250



Eisenglass
Enclosure

\$5,500



RGB Changing Lights
(Cockpit)

\$2,750



Fusion® Marine Amplifier
(Extra) (2 Channels)

\$1,595



Fusion® Marine
Speakers (Extra Pair)

\$895



JBL® Marine Amplifier
(Extra) (2 Channels)

\$1,395



JBL® Marine Speakers
(Extra Pair)

\$695



Set of Waterproof
Exterior Seat Covers

\$2,200



Complete Branded
Boat Nylon Cover

\$3,200



Bottom Paint
Anti-fouling Coppercoat Paint

\$9,500



Mid Ship Cabin Room
Enclosure (Wood)

\$3,750



Main Cabin Room
Enclosure (Wood)

\$4,995

ADDITIONAL UPGRADES



Leather Cover Panel
(Dashboard Top Part)

\$1,250



Leather Cover Panel
(Complete Dashboard & Helm)

\$2,995



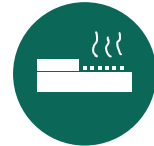
Waterproof Dashboard
Cover (Helm)

\$450



Fireboy® - Advanced Automatic
Anti-fire System

\$9,500



Kenyon Electric Grill
(Stern)

\$3,750



Refrigerated 12V
Drawer (Cockpit)

\$2,950



Ice Maker
(Cabin)

\$3,495



Microwave

\$750



Livewell
(Cockpit)

\$1,950



Removable Ladder
(Beach Club)

\$995



Additional USB
Socket

\$350



Adjustable Helm Seat
(Manual)

\$1,375



Adjustable Helm Seat
(Electric)

\$2,995



Engine Protection Railing
w/ Rod Holders

\$3,500



Ceramic Marble Wall
(Bathroom)

\$1,250

ADDITIONAL UPGRADES



LED
Mirror

\$1,195



Black
Hardware

\$1,995



Black
Railing

\$950



Weatherized
Canvas Boat Cover

\$3,500



Humphree® Automatic
Trim Tabs

\$5,295



MC² Quick Gyro X10
Stabilizers

\$46,500



Underwater Lights
(Pair)

\$1,500



Bow
Thrusters

\$14,000



Synthetic Teak Flooring
(Cockpit, Platform, Bow)

\$6,695



Standard Fiberglass Flooring
(Cockpit, Platform, Bow)

\$2,500



Boat
Trailer

\$19,000

PREMIUM UPGRADES

Got Essential but want more?
Upgrade to our **Premium** options.



Twin Mercury® Verado 350HP V10
Outboards w/ Joystick Piloting

\$25,750



A/C System 6,000 BTU
(Extra Unit - Cockpit)

\$4,245



A/C System 16,000 BTU
(Upgrade from 12,000 BTU - Cabin)

\$1,200



Kohler® 6KVA
Power Generator

\$2,250



GPS SIMRAD®
Go9 (9")

\$1,250



Fusion® Marine Sound System Kit
+ 6 Speakers + Amplifier

\$2,450



External Double Painting
(2 Or More Colors, Hull, Deck Or HT)

\$2,500



Teak Table On Stern
(Platform Extra Table)

\$850



LED 24" TV Set
And Mounting

\$950



Induction Electric
Stove (Cabin)

\$950



Isotherm 65L
Fridge 12v

\$2,500



Italian Steering
Wheel

\$750



Hot Water System
Heater (Shower)

\$3,950



Bar Stools/Chairs on Stern
(Kit Of 2 Banquets)

\$950



Head Lights W/ Remote
(Cruising Spotlight)

\$1,350

PREMIUM+ UPGRADES

Got **Premium** but want more?
Upgrade to our **Premium+** options.



Twin Mercury® Verado 400HP
V10 w/ Joystick Piloting

\$15,000



JL AUDIO KIT 1
Media Master, 6
Speakers, AMP

\$2,050



JL AUDIO KIT 2
Media Master, 8 Speakers,
Media Controller, AMP, SUB

\$6,950



GPS SIMRAD®
NSS12 (12")

\$2,600



GPS SIMRAD®
NSO EVO3 (16")

\$4,950



External Complete
Special Paint And Or
Color Selection

\$2,950



Kohler® 9KVA
Power Generator

\$6,950



Kohler® 11KVA
Power Generator

\$12,950



A/C System
9,000 BTU (Cockpit)

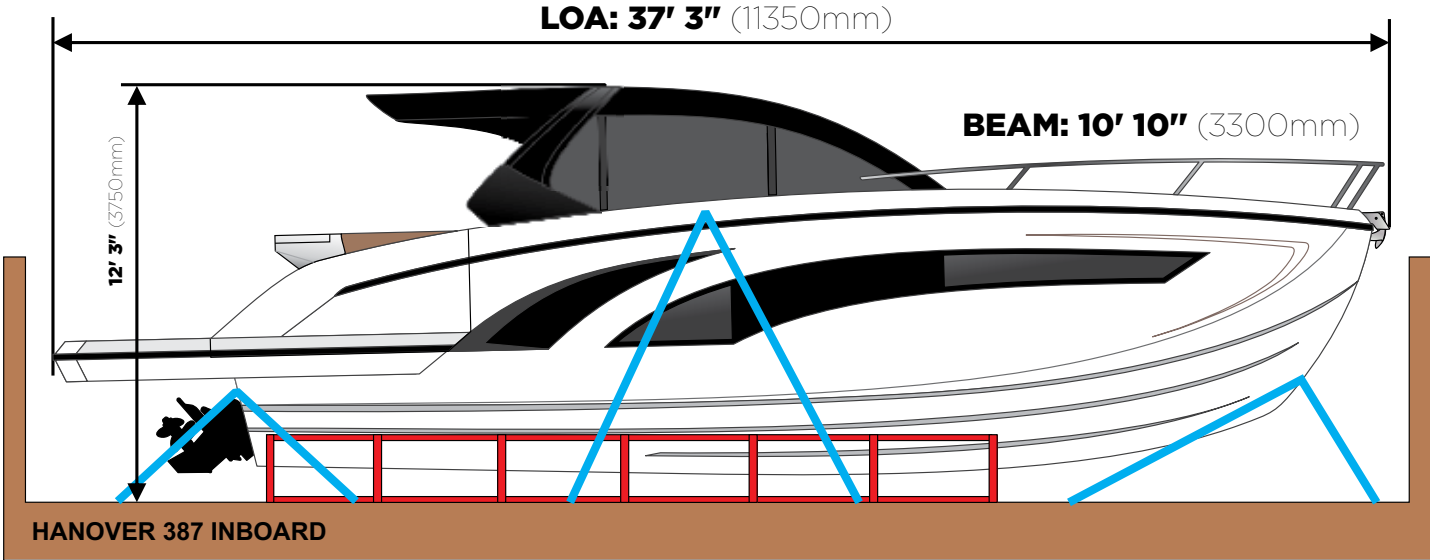
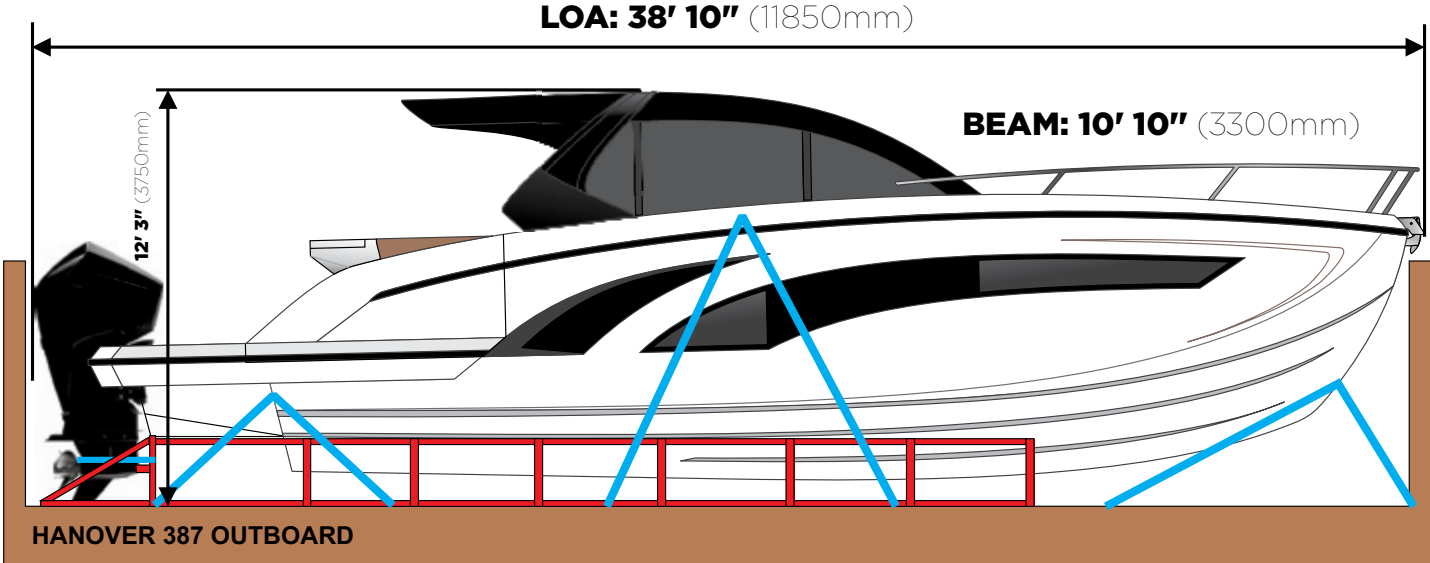
\$5,900



A/C System
25,000 BTU (Cabin)

\$9,950

SHIPPING DIMENSIONS



HANOVER OWNERSHIP PROGRAM

At Hanover, we ensure an exciting stress-free experience from the moment you discover our brand.

STRESS-FREE PRICING

Our entire lineup comes at our lowest price - no haggling needed. Leave the negotiations to used car salesmen, and enjoy a straightforward buying experience with us.

FIRST TRIP

We've got you covered - you will get training and your first cruise comes with a captain by your side (up to 4 hours). Feel like a pro and make the most of your experience!

MAINTENANCE AND WARRANTY

Every Hanover vessel includes a 5-Year Premier Level Hull Warranty, 1 Year General, Mechanical and Components Warranty, All Accessories & Electrical Parts Under The Original Manufacturer's Warranty.

Sail with complete confidence knowing you have a team of dedicated professionals at your service.

Don't just own a boat, be part of the Hanover Lifestyle.

Hanover

Hanover

www.hanoveryachts.com